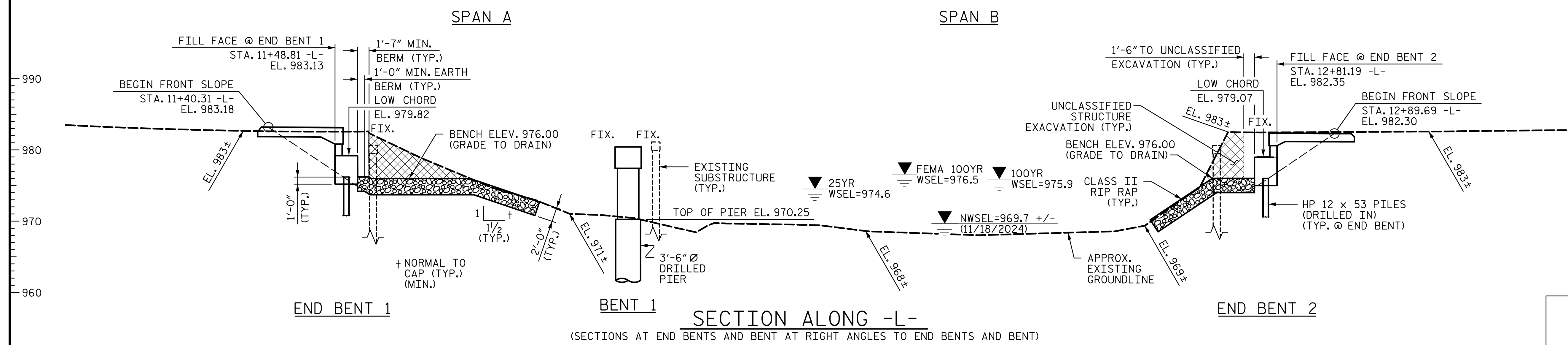
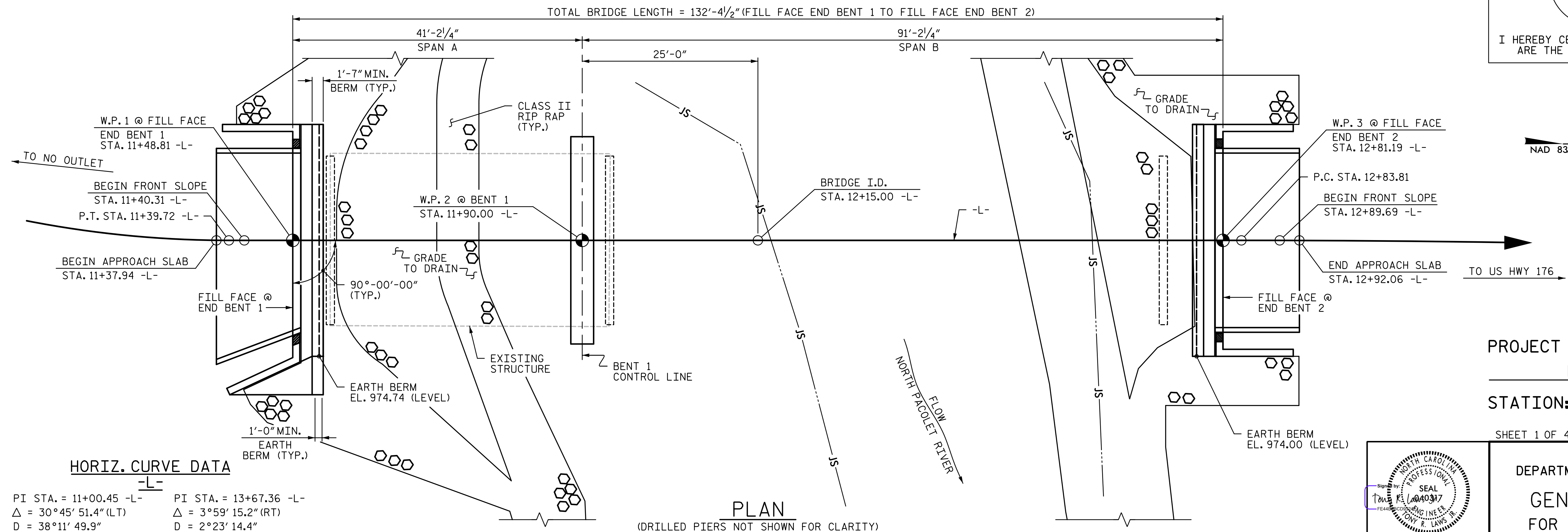


GRADE DATA  
PVI STA. 11+05.00 -L-  
PVI EL. = 983.39  
LVC = 70.00'

GRADE DATA  
PVI STA. 13+20.00 -L-  
PVI EL. = 982.12  
LVC = 60.00'



I HEREBY CERTIFY THESE PLANS ARE THE AS-BUILT PLANS.



PROJECT NO. DF18314.2075090  
POLK COUNTY  
STATION: 12+15.00 -L-

SHEET 1 OF 4 REPLACES BRIDGE NO. 740112

HORIZ. CURVE DATA  
-L-  
PI STA. = 11+00.45 -L-  
Δ = 30°45' 51.4" (LT)  
D = 38°11' 49.9"  
L = 80.54'  
T = 41.27'  
R = 150.00'

-R-  
PI STA. = 13+67.36 -L-  
Δ = 3°59' 15.2" (RT)  
D = 2°23' 14.4"  
L = 167.03'  
T = 83.55'  
R = 2,400.00'

DRAWN BY : T. R. LAWS DATE : 02/2025  
CHECKED BY : M. KHIN DATE : 02/2025  
DESIGN ENGINEER OF RECORD: T. R. LAWS DATE : 10/2025

DOCUMENT NOT CONSIDERED  
FINAL UNLESS ALL  
SIGNATURES COMPLETED

10/7/2025

**RS&H**

RS&H Architects-Engineers-Planners, Inc.  
8521 Six Forks Road, Suite 400  
Raleigh, NC 27615  
919-928-4100 FAX 919-846-9080  
www.rsandh.com  
North Carolina License Nos. 50073-F-4993-C-20

REVISIONS						SHEET NO.
NO.	BY:	DATE:	NO.	BY:	DATE:	
1			3			S-1
2			4			TOTAL SHEETS 24